

VISITOR INTERPRETIVE CENTRE

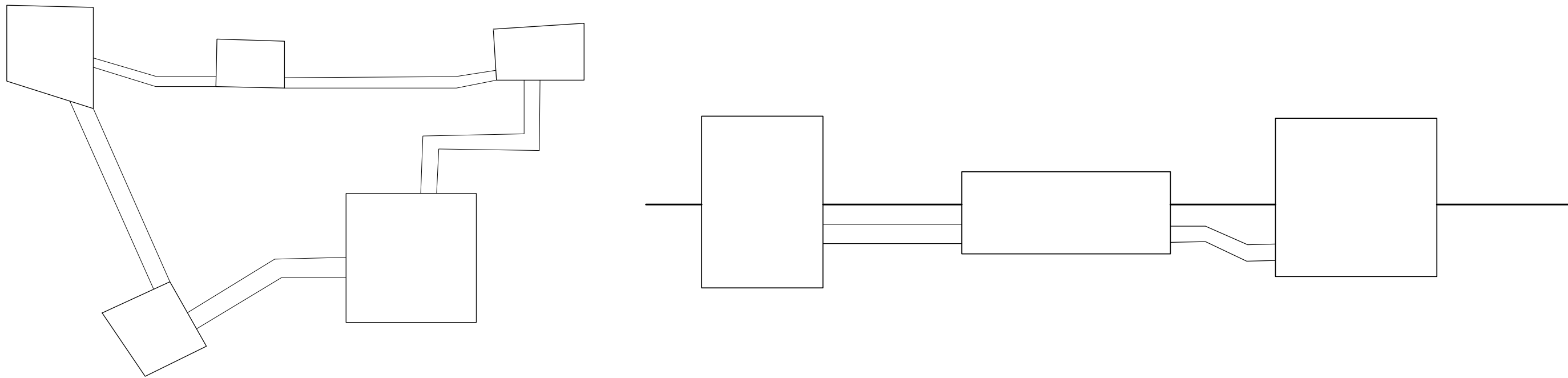
LABRADOR PARK, SINGAPORE

LABRADOR NATURE PARK IS ONE OF SINGAPORE'S FEW NATURE RESERVED PARK. THE ENTIRE NATURE RESERVE, TOGETHER WITH THE CURRENT PARK, USED TO BE CALLED PASIR PANJANG BEACH, OR LONG BEACH. THE AREA USED TO BE A LONG STRIP OF COASTAL LAND AT HIGH TIDE, AND A ROCKY BEACH AT LOW TIDE, BEFORE LAND RECLAMATION TOOK PLACE, FORMED THE SEAWALLS AND GRASSY PARK SEEN TODAY.

LABRADOR NATURE RESERVE CONTAINS MANY HISTORICAL STRUCTURES FROM WORLD WAR II AND EARLIER, LEFT BEHIND BY THE BRITISH. THAT IS BECAUSE IT HAS A LONG HISTORY, DATING BACK TO THE 19TH CENTURY. IT ALSO PLAYED A SIGNIFICANT ROLE IN THE HISTORY OF SINGAPORE. THIS IS BECAUSE ONE OF THE MOST HIGHLIGHTED EVENTS IN THE WAR ACTUALLY HAPPENED IN PASIR PANJANG. IT IS WHEN THE MALAY REGIMENT OF THE SINGAPOREAN SOLDIERS LOST TO THE SUDDEN ATTACK FROM THE JAPANESE. ALTHOUGH OUTNUMBERED, THE MALAY REGIMENT FOUGHT BACK TO THE JAPANESE UNTIL THE LAST OF THEM. THE ARMY NEVER GIVE UP AND WOULD RATHER DIE IN THEIR HOMETLAND THAN BOWING DOWN TO THE JAPANESE'S COMMANDS.

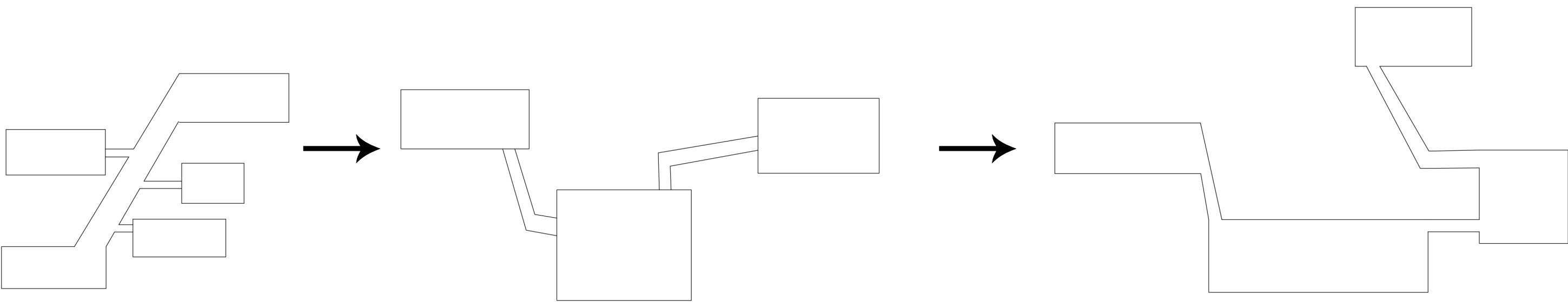
THE ARMY HAVE A VERY STRONG SENSE OF PATRIOTISM TOWARDS THEIR HOMETLAND, AND PROTECTED IT WITH ALL THEIR MIGHT. DESPITE THE RICH AND IMPORTANT HISTORY BEHIND THE SITE, IT IS VERY MUCH FORGOTTEN BY THE VISITORS WHO WENT TO THE SITE. THUS, ALL THESE INSPIRING STORIES HAS INSPIRED ME TO DESIGN A VIC THAT WOULD CREATE AWARENESS TO THE VISITORS ABOUT THIS FORGOTTEN HISTORY. HENCE, THE CONCEPT "REMINISCING" WHICH MEANS INDULGING IN A RECOLLECTION OF PAST EVENTS, IS USED. THE VISITORS WOULD FEEL LIKE THE ARMY AND BE CONNECTED TO THE PAST EVENTS THAT HAPPENED IN THE SITE AS THEY ENTER MY VIC.

DESIGN CONCEPT

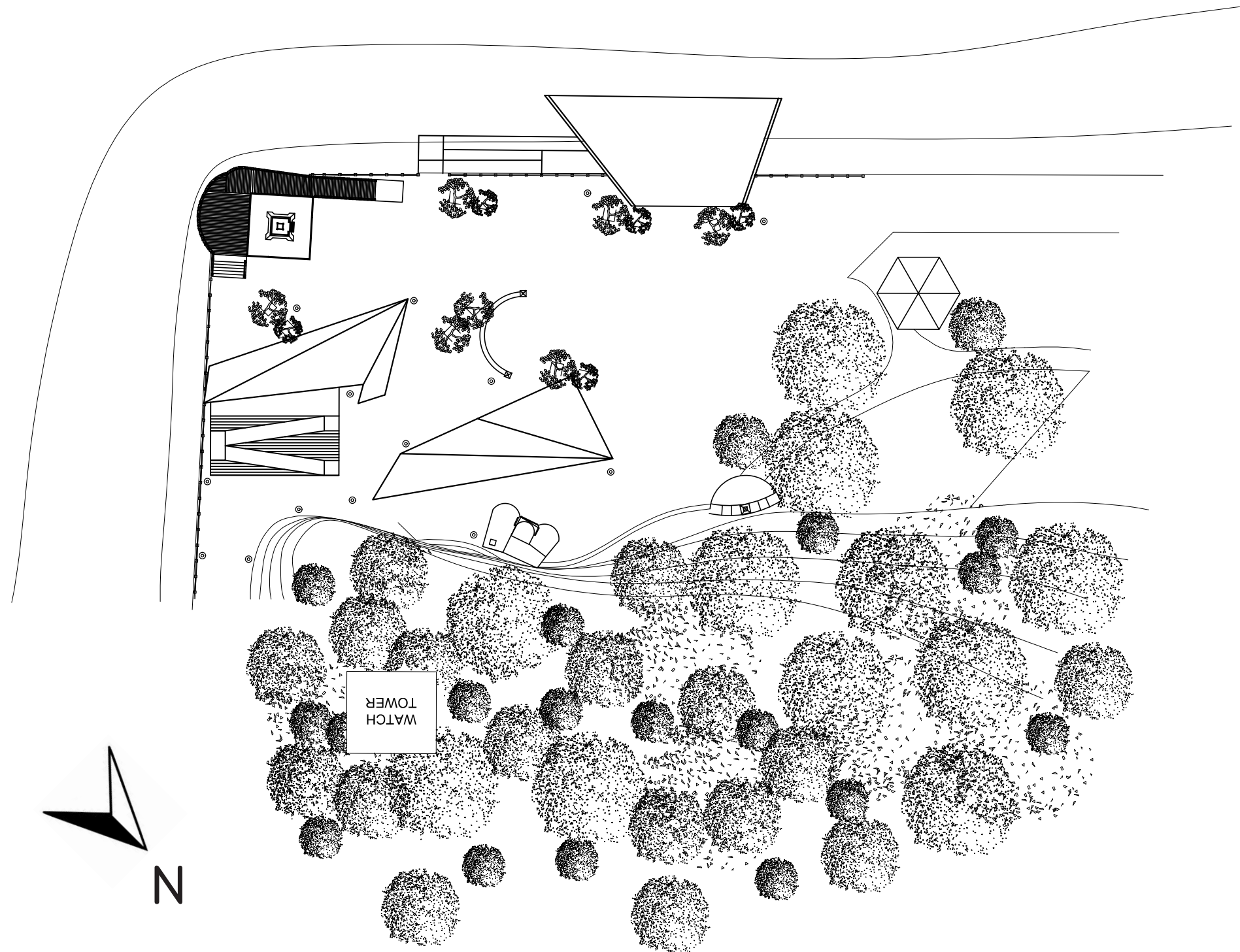


THE DESIGN CONCEPT OF THE VIC IS INSPIRED BY FORTRESSES AND TUNNELS IN THEM. THIS IS BECAUSE THE SITE CONTAINS THE ACTUAL FORT, BUT IT IS PROHIBITED FOR THE VISITORS, HENCE MAKING THEM UNABLE TO EXPERIENCE THE HISTORY AND THE FEELING OF THE ARMY. THEREFORE, THE VIC WILL ALLOW THE VISITORS TO EXPERIENCE THE HISTORY AND THE SPACES AT THE SAME TIME. FORTRESSES ARE WELL-KNOWN FOR THEIR LONG AND NARROW UNDERGROUND TUNNELS, WHICH WOULD LEAD THE ARMY FROM ONE SPACE TO THE OTHER, WITHOUT BEING SEEN BY THE ENEMY. FORTRESSES ARE ALSO KNOWN FOR THEIR HIERARCHY OF SPACES, AND HOW THEY ARRANGE THE SPACES ALONG THE COAST OF AN ISLAND OR LAND.

DESIGN DEVELOPMENT



DUE TO THE INSPIRATION FROM FORTRESSES AND TUNNELS, THE DESIGN OF THE VIC IS VARIED IN TERMS OF SPATIAL ALLIGNMENT AND HEIRARCHY, AND THE ARRANGEMENT OF THE SPACES ALONG THE EDGES OF THE SITE IS ALSO PRIORTIZED. HOWEVER, DUE TO SITE CONTOUR CONSTRAINTS, THE ARRANGEMENT OF SPACES ARE MANIPULATED TO BE ALONG THE EXISTING STRUCTURES IN THE SITE.



SITE PLAN

SCALE 1:500



CASE STUDIES



YAD VASHEM, ISRAEL

YAD VASHEM IS ISRAEL'S OFFICIAL MEMORIAL TO THE JEWISH VICTIMS OF THE HOLOCAUST, ESTABLISHED IN 1953 THROUGH THE YAD VASHEM LAW PASSED BY THE KNESSET, ISRAEL'S PARLIAMENT. THE MUSEUM, DESIGNED BY MOSHE SAFDIE, IS SHAPED LIKE A TRIANGULAR CONCRETE "PRISM" THAT CUTS THROUGH THE LANDSCAPE, ILLUMINATED BY A 200-METER LONG SKYLIGHT. VISITORS FOLLOW A PRESET ROUTE THAT TAKES THEM THROUGH UNDERGROUND GALLERIES THAT BRANCH OFF FROM THE MAIN HALL. VISITORS ARE GUIDED INTO THE GALLERIES BY A SERIES OF IMPASSABLE GAPS THAT OF THE HOLOCAUST ARE HIGHLIGHTED.



NANJING MASSACRE MEMORIAL HALL, CHINA

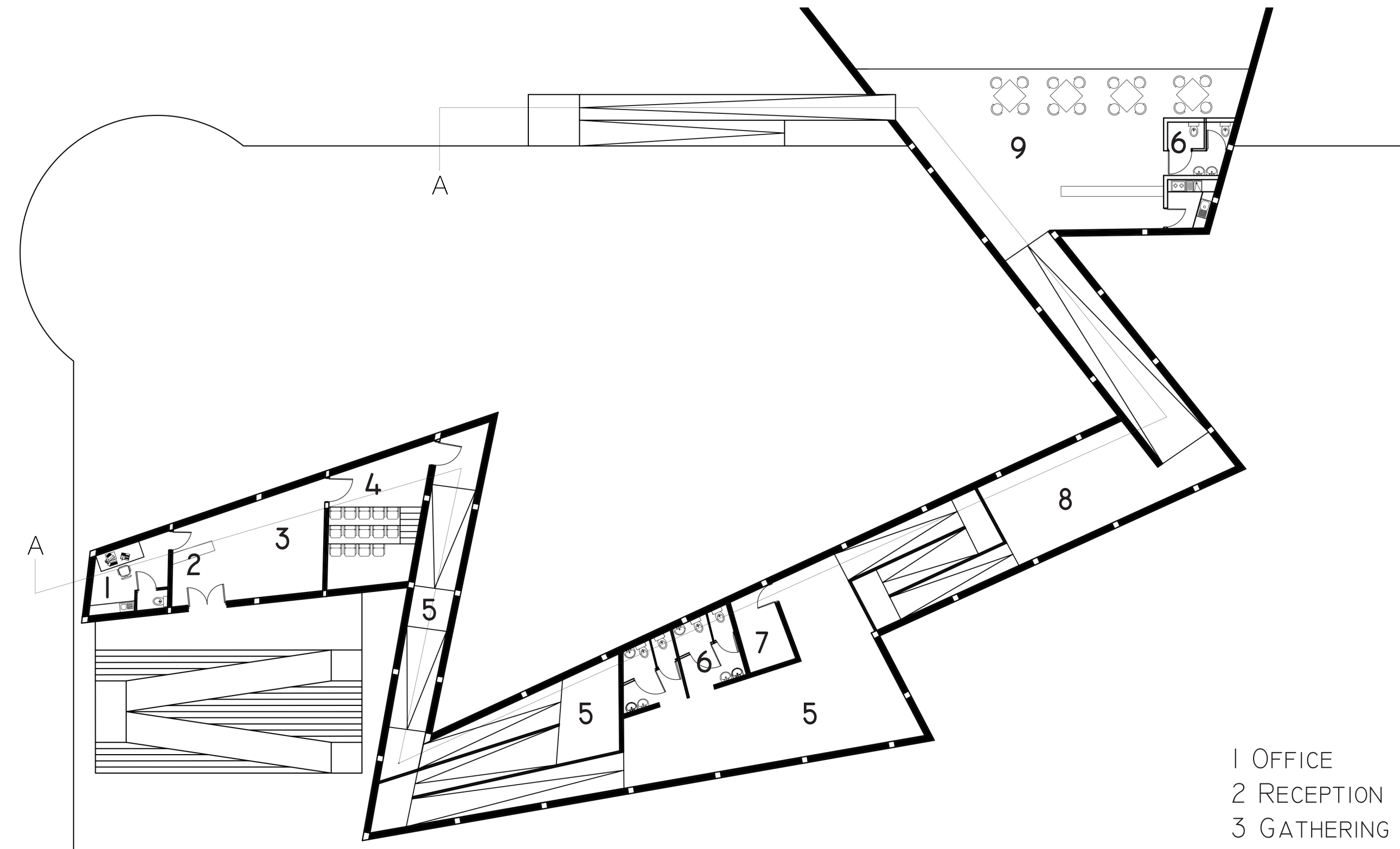
THE MEMORIAL FOR COMPATRIOTS KILLED IN THE NANJING MASSACRE BY JAPANESE FORCES OF AGGRESSION IS THE HALL TO MEMORIALIZE THE PEOPLE KILLED IN THE NANJING MASSACRE BY THE IMPERIAL JAPANESE ARMY . THE NANJING MEMORIAL HALL WAS BUILT IN 1985 BY THE NANJING MUNICIPAL GOVERNMENT IN MEMORY OF THE 300,000 VICTIMS WHO LOST THEIR LIVES DURING THE NANJING MASSACRE. THE MEMORIAL EXHIBITS HISTORICAL RECORDS AND OBJECTS, AND USES ARCHITECTURE, SCULPTURES, AND VIDEOS TO ILLUSTRATE WHAT HAPPENED DURING THE NANJING MASSACRE. THE MEMORIAL CONSISTS OF THREE MAJOR PARTS: OUTDOOR EXHIBITS, SHELTERED SKELETAL REMAINS OF VICTIMS, AND AN EXHIBITION HALL OF HISTORICAL DOCUMENTS.



SITE A RECLAIMED LAND NEXT TO CLIFF

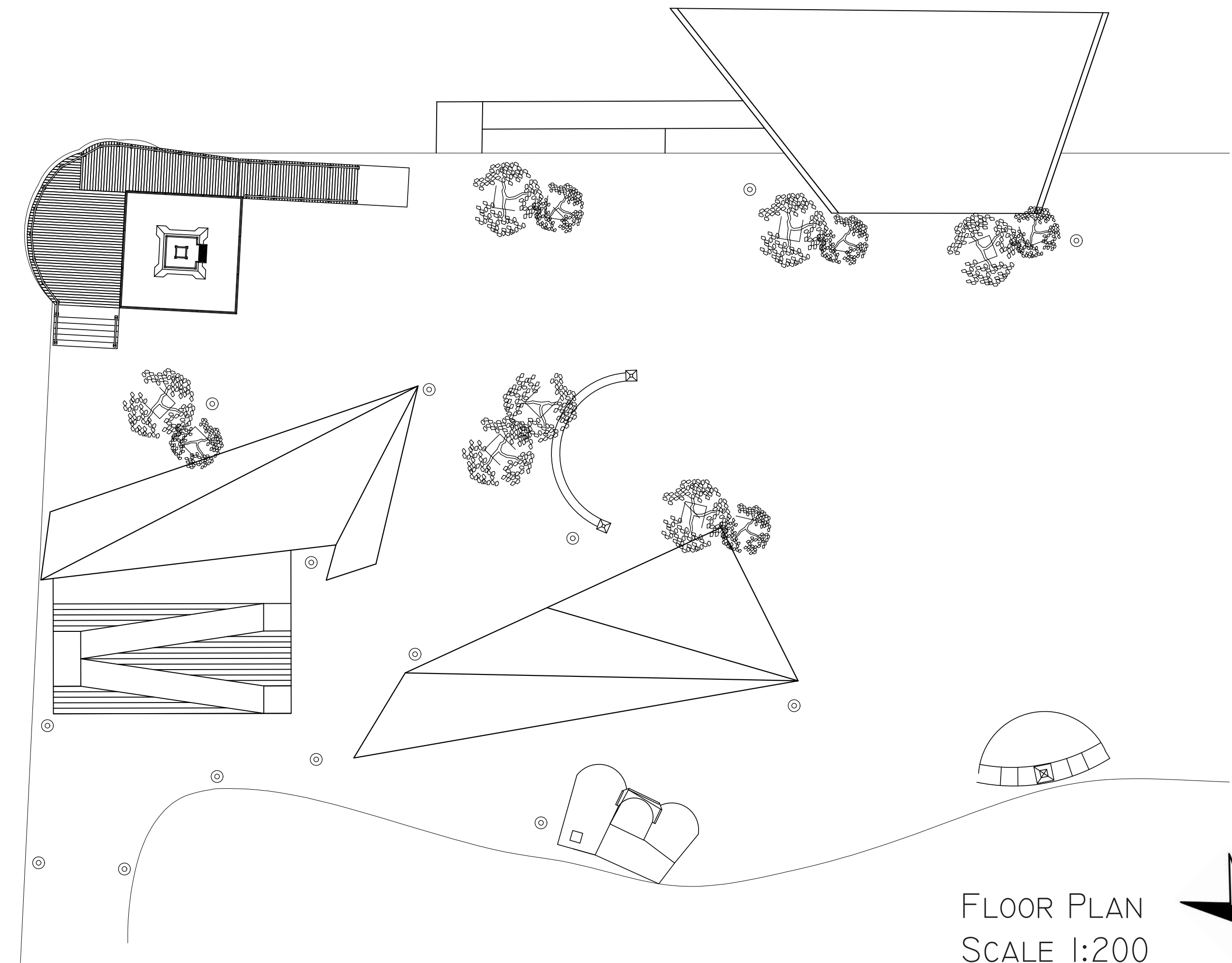
THIS SITE IN LABRADOR PARK IS CHOSEN TO BUILD THE VIC. AS SEEN HERE, THE SITE IS CONSTANTLY SHINED BY THE SUN THROUGHOUT THE DAY. THIS SITE IS ALSO ONE OF THE MOST POPULAR AREA FOR HUMAN ACTIVITIES TO TAKE PLACE IN LABRADOR PARK. SUCH ACTIVITIES ARE JOGGING, RELAXING, CYCLING, DOG WALKING, PICNICKING, SKATEBOARDING, AND FAMILY OUTINGS. THIS SITE IS ALSO POPULAR FOR THE EXISTING HISTORICAL STRUCTURES THAT ARE REMAINED AND MAINTAINED UNTIL TODAY. HENCE, VISITORS WILL MOST PROBABLY COME TO THIS SITE TO EXPERIENCE THE STRUCTURES.

THE SITE IS ALSO CHOSEN IN ACCORDANCE TO THE CONCEPT OF THE DESIGN, AS THE DESIGN NEEDS TO BE ARRANGED ALONG THE EDGE OF A LAND TO FULFILL THE CONCEPT REQUIREMENTS.



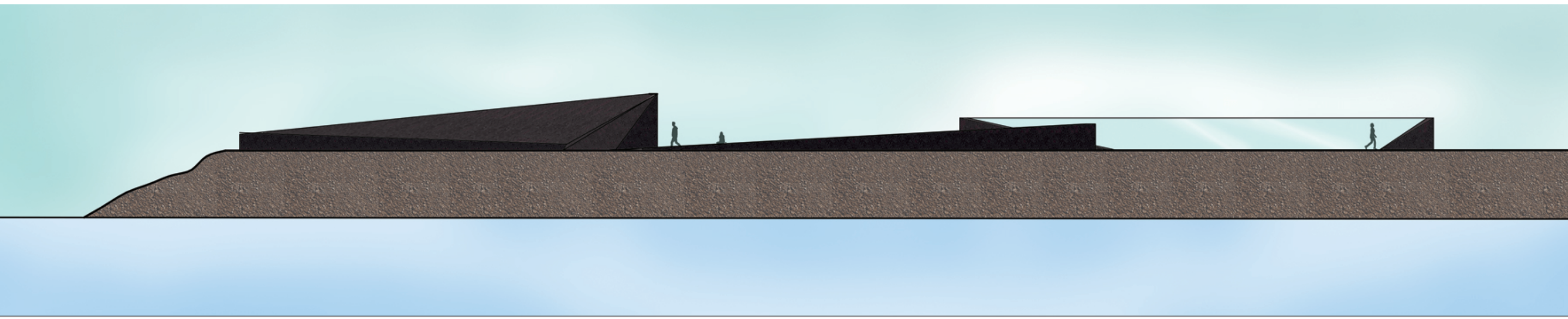
FLOOR PLAN
SCALE 1:200

- 1 OFFICE
- 2 RECEPTION
- 3 GATHERING AREA
- 4 THEATRE
- 5 GALLERY
- 6 PUBLIC BATHROOMS
- 7 STORAGE
- 8 MEMORIAL WALL
- 9 CAFETERIA

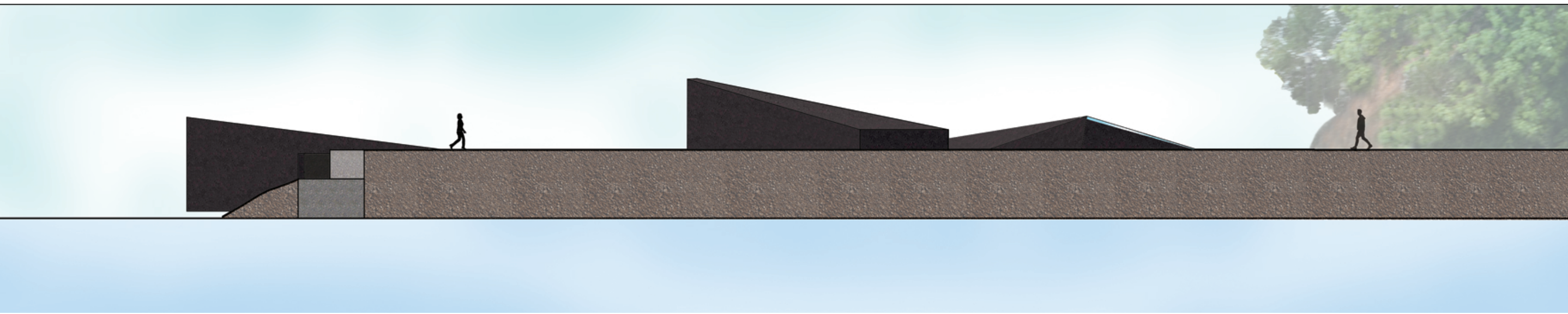


FLOOR PLAN
SCALE 1:200

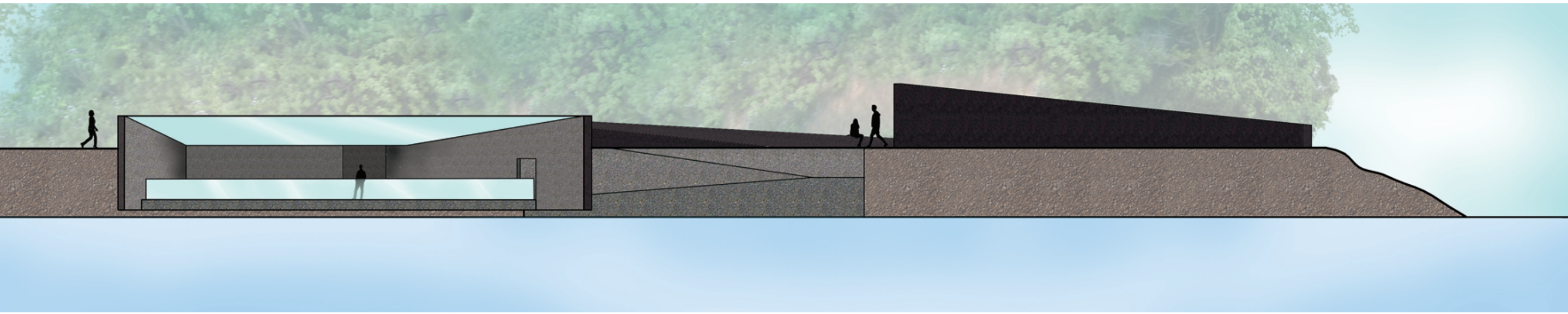
" IF WE DO NOT REMEMBER OUR HEROES, WE WILL
PRODUCE NO HEROES. "



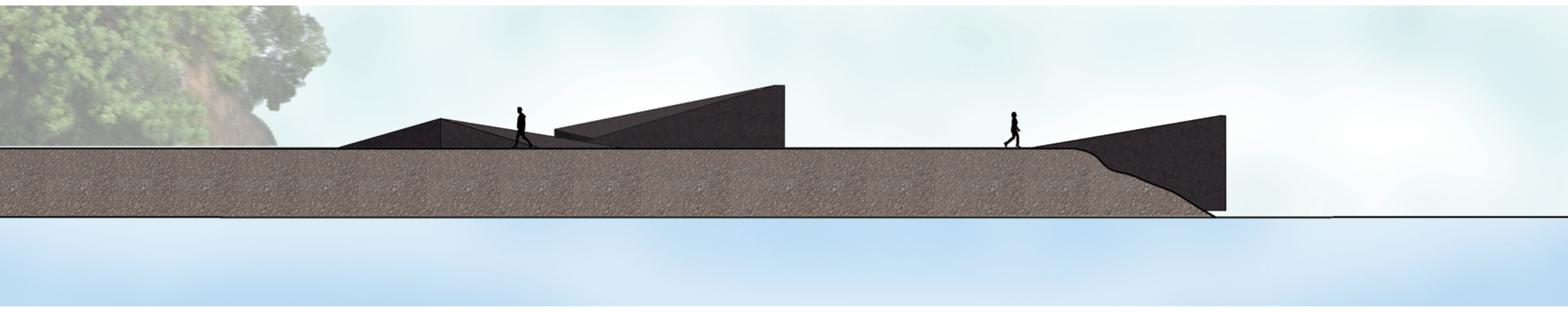
FRONT ELEVATION
SCALE 1:200



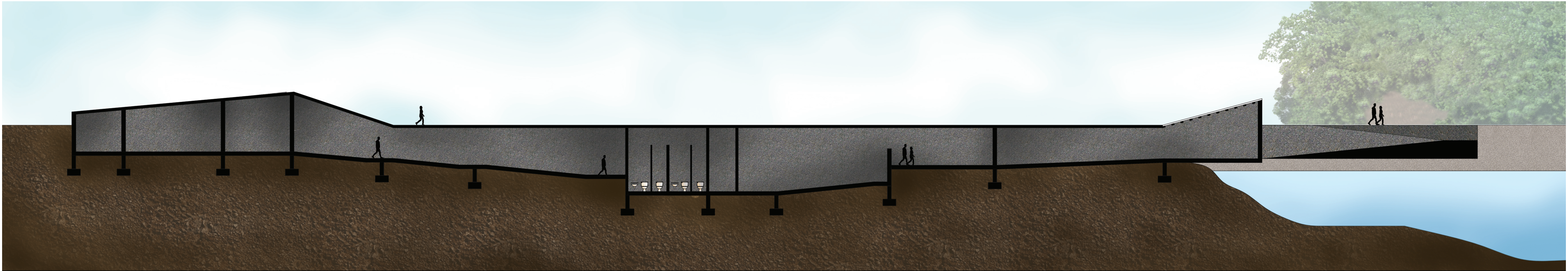
LEFT ELEVATION
SCALE 1:200



REAR ELEVATION
SCALE 1:200



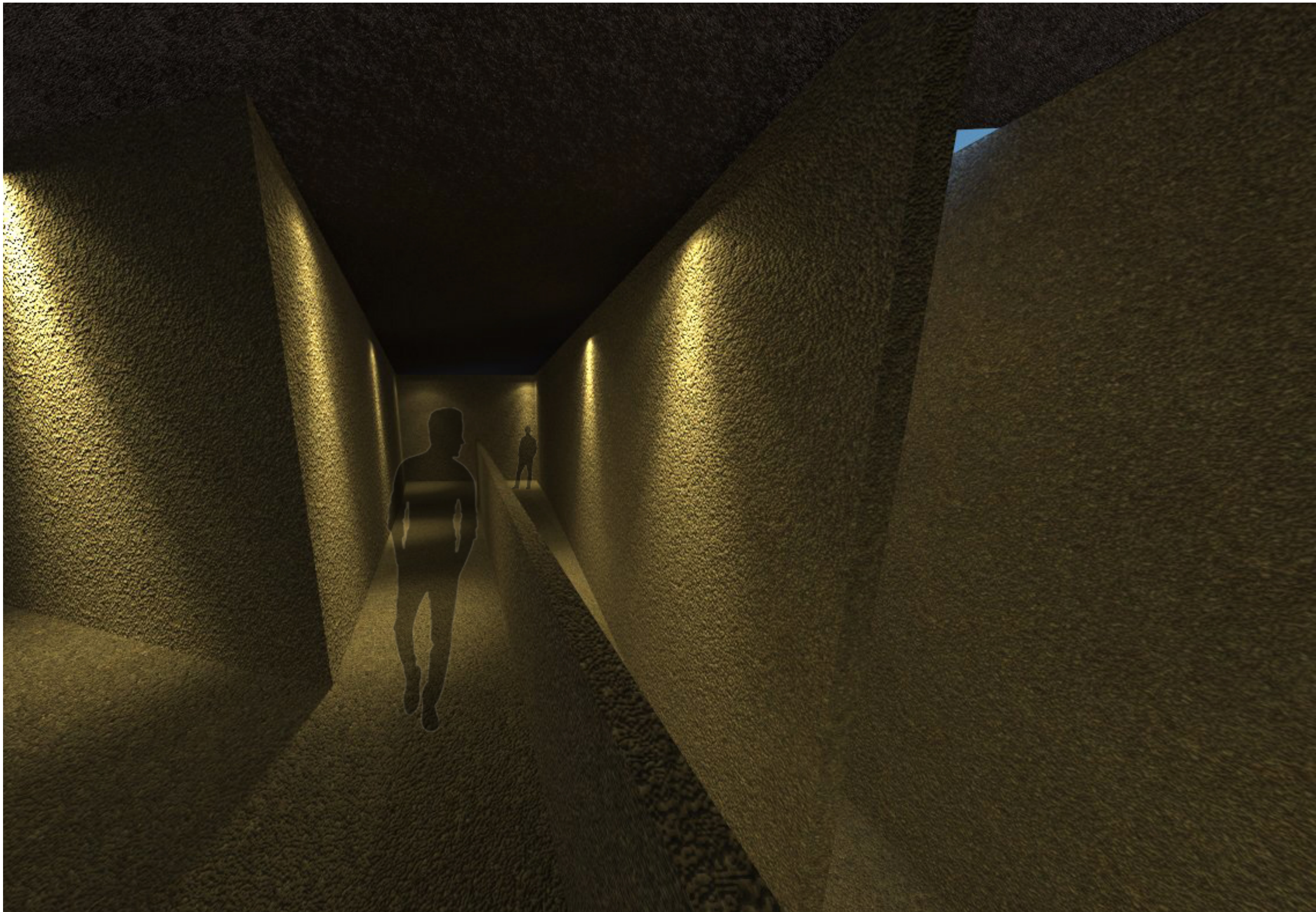
RIGHT ELEVATION
SCALE 1:200



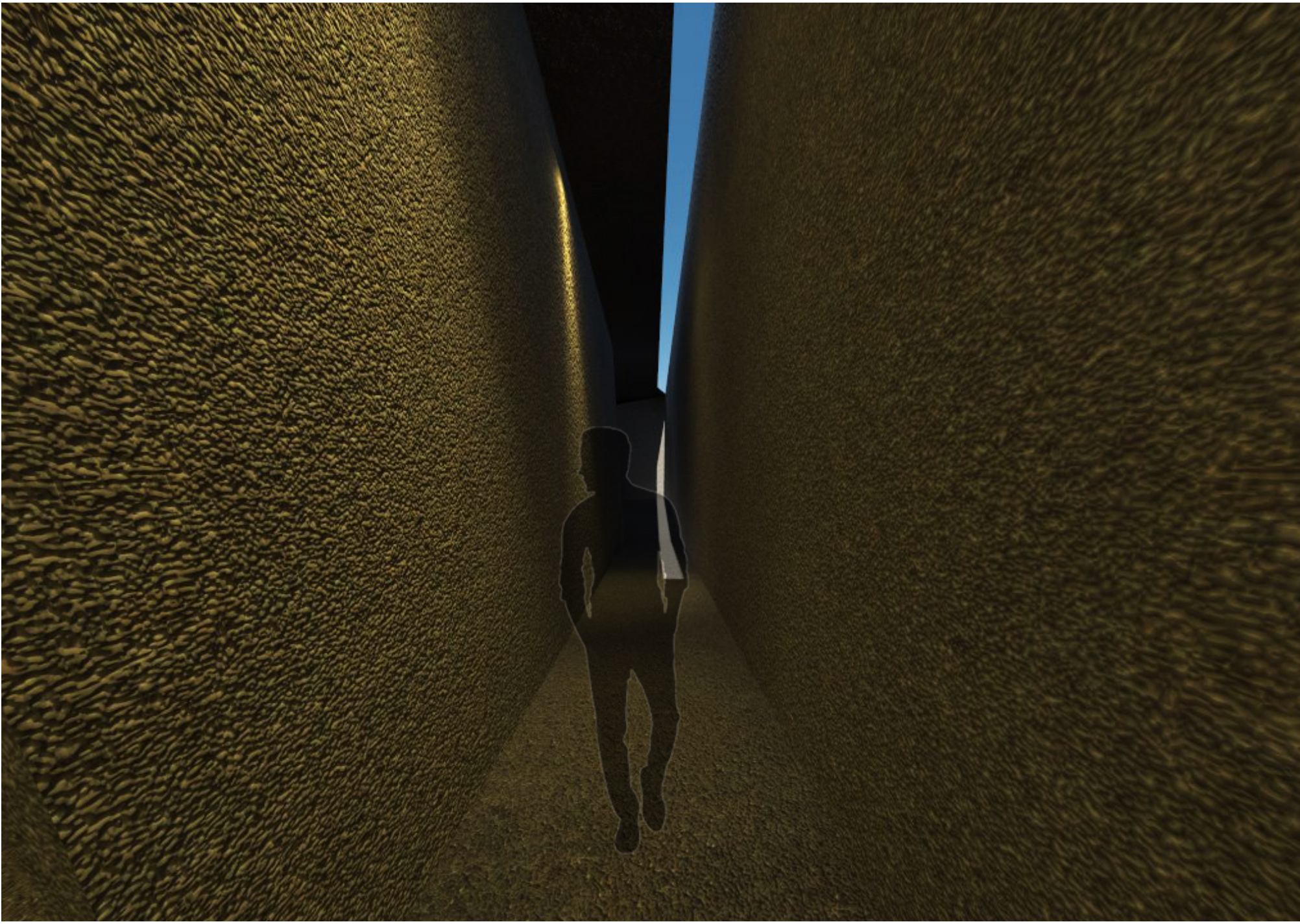
SECTION A-A
SCALE 1:100



EXTERIOR VIEW OF THE VIC AT THE ENTRANCE OF THE SITE.



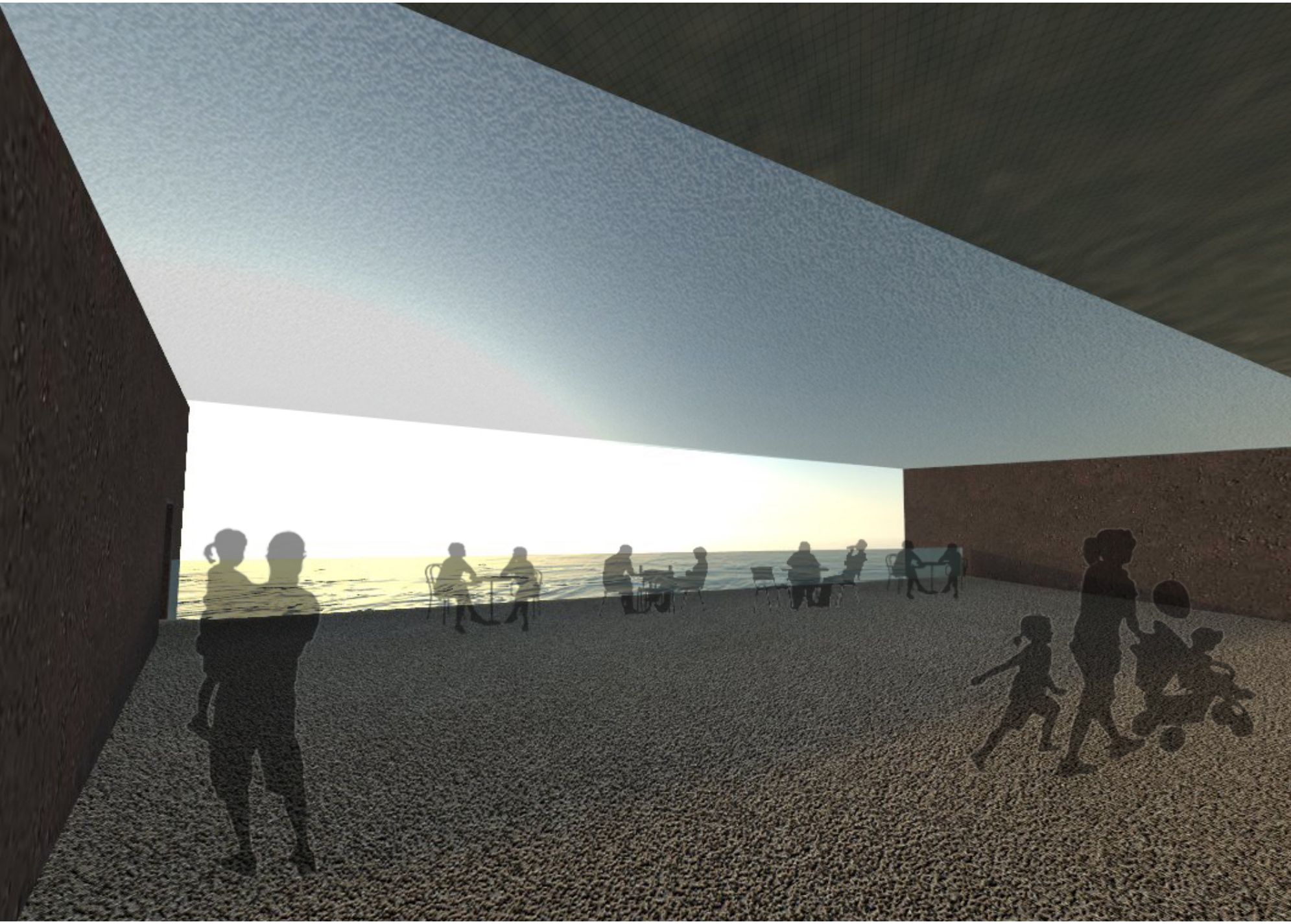
INTERIOR VIEW OF THE GALLERY FILLED WITH HIGH WALLS AND LONG, NARROW RAMPS TO GIVE THE FEELING OF UNDERGROUND TUNNEL.



INTERIOR VIEW OF THE LOWEST PART OF THE GALLERY, WITH SKYLIGHT ABOVE TO GIVE A SENSE OF HOPE EVEN WHEN THE ARMY LOST THE BATTLE.



INTERIOR VIEW OF THE MEMORIAL WALL, TO LET THE VISITORS RECOGNISE AND APPRECIATE THE HARDSHIPS THAT THE AMRY HAS BEEN THROUGH.



INTERIOR VIEW OF THE CAFETERIA, WHERE MAXIMUM SUNLIGHT IS GAINED, TO GIVE A SENSE OF FREEDOM. VIEW OF THE OPPOSITE INDUSTRIAL AREA WILL GIVE A SENSE OF INDEPENDENCE OF THE NATION.