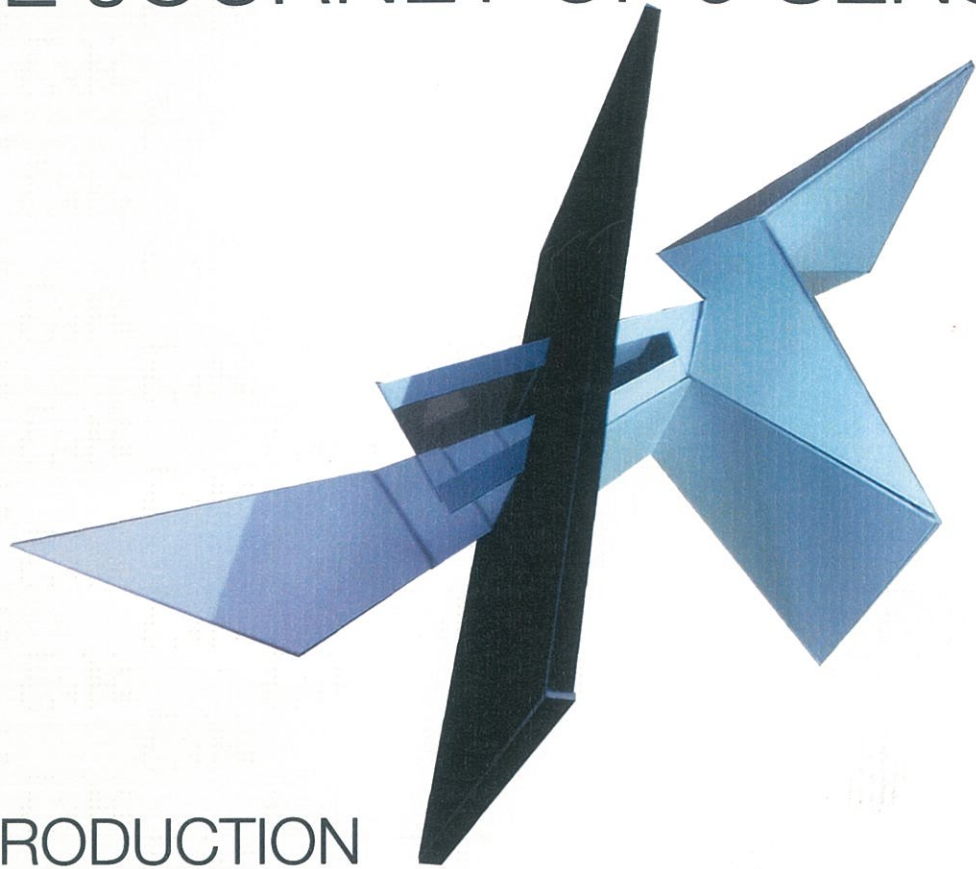
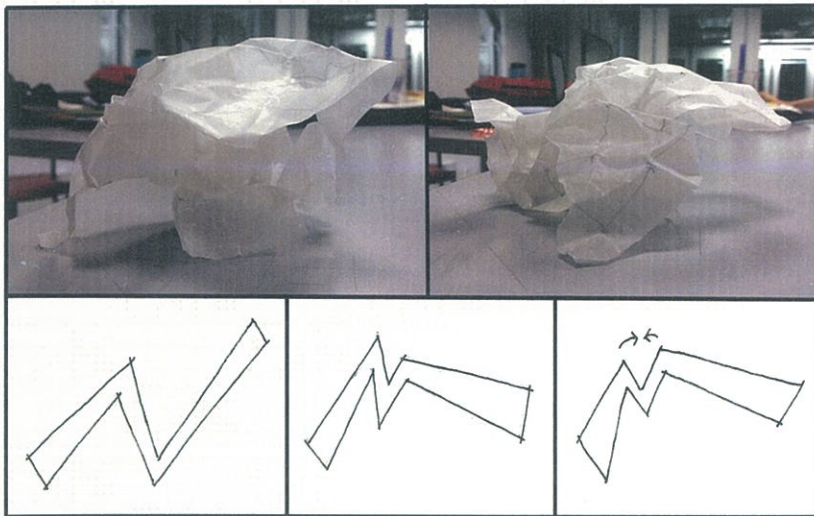


THE JOURNEY OF 5 SENSES - LINEAR



INTRODUCTION

THE CONCEPT OF THE JOURNEY WAS INCORPORATED INTO THE DESIGN AS A LINEAR EXPERIENCE. IT'S SITTING ALONG THE HORIZON CLIFF, SHOWING STRONG SYMBOLISM OF INTERNAL STRUGGLE AND EDGINESS RESONATING FROM ITS WALL. EACH SPACE OF THE DESIGN REPRESENTS ONE STAGE OF THE JOURNEY, REFLECTING THE INNER EMOTIONS OF THE WRITER; AFRAID OF BEING HURT, HIDING HIMSELF FROM THE OUTSIDE WORLD, STRUGGLING TO FIND A SLICE OF HOPE AND FREEDOM TILL THE END OF THE JOURNEY.

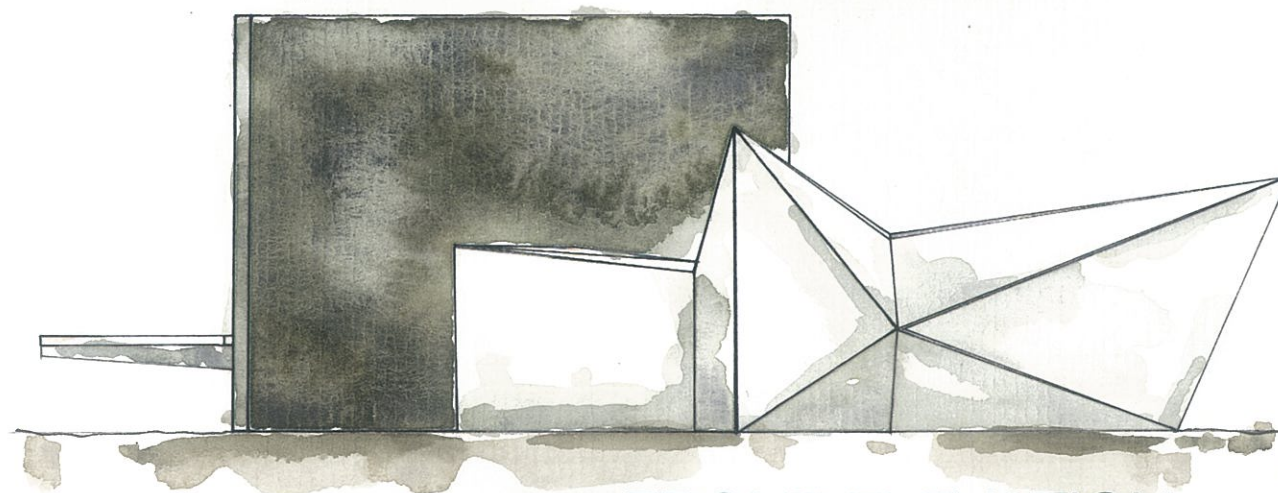


DESIGN DEVELOPMENT

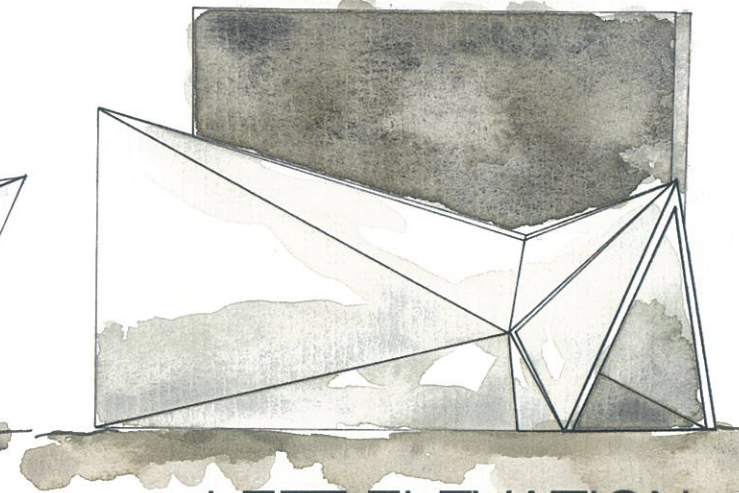
THE CONCEPT OF THIS BUILDING IS INTERNAL STRUGGLE, ANXIETY AND SELF DESTRUCTION. THUS THE DESIGN DEVELOPMENT OF THIS BUILDING HAS TRANSFORMED FROM A PIECE OF CRUSHED PAPER OUT OF FRUSTRATION AS AN INSPIRATION TO THE FINAL BUILT FORM.



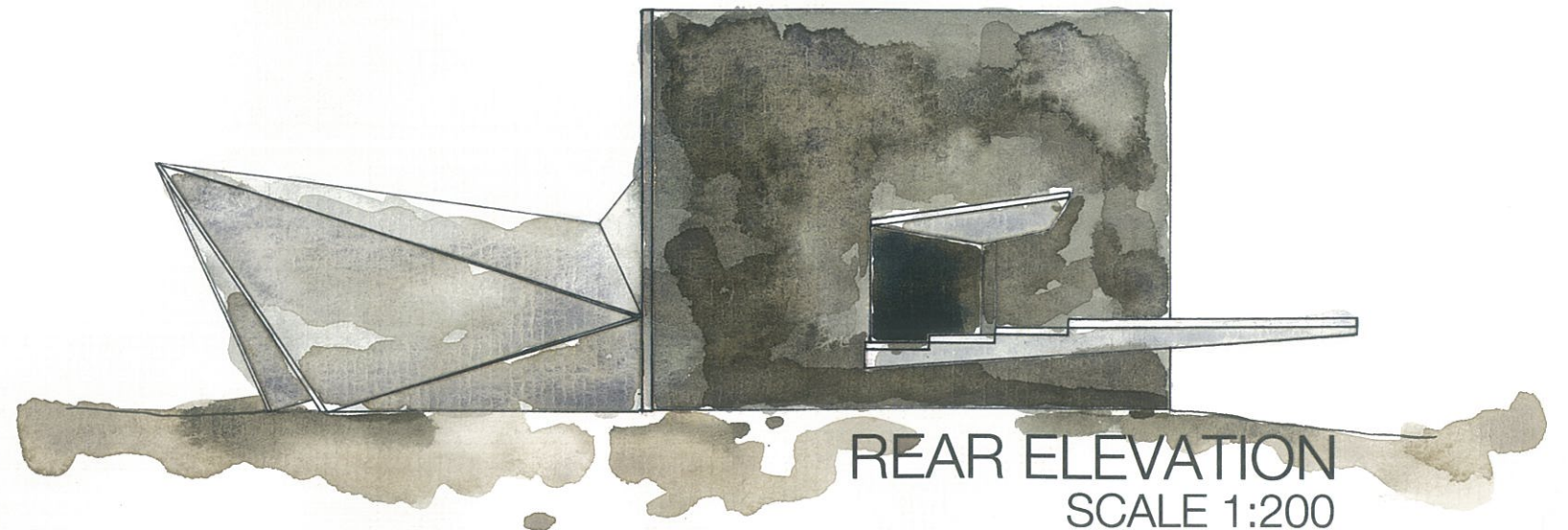
SITE PLAN
SCALE 1:300



FRONT ELEVATION
SCALE 1:200



LEFT ELEVATION
SCALE 1:200



REAR ELEVATION
SCALE 1:200