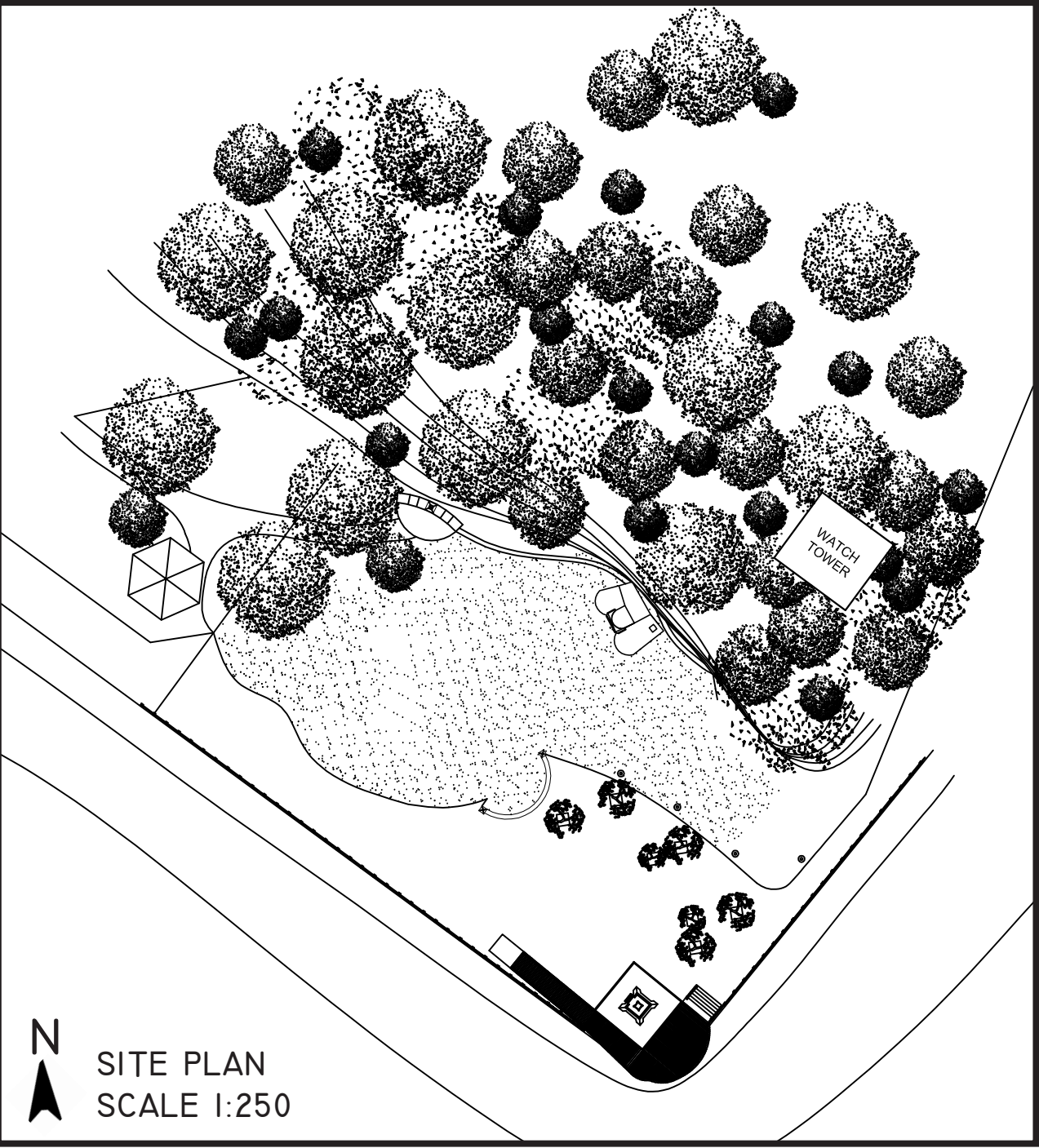


DESIGN STUDIO 3 | PROJECT 2
GENIUS LOCI : SITE ANALYSIS & CONCEPT DEVELOPMENT

CYNTHIA LEE SIAW WUN 0306112
DEIDRE ZHANG SHU-WEI 0304619
GAN SUE JING 0307957
LEE JIA XIN 0308389
WONG YOKE LIN 0308254

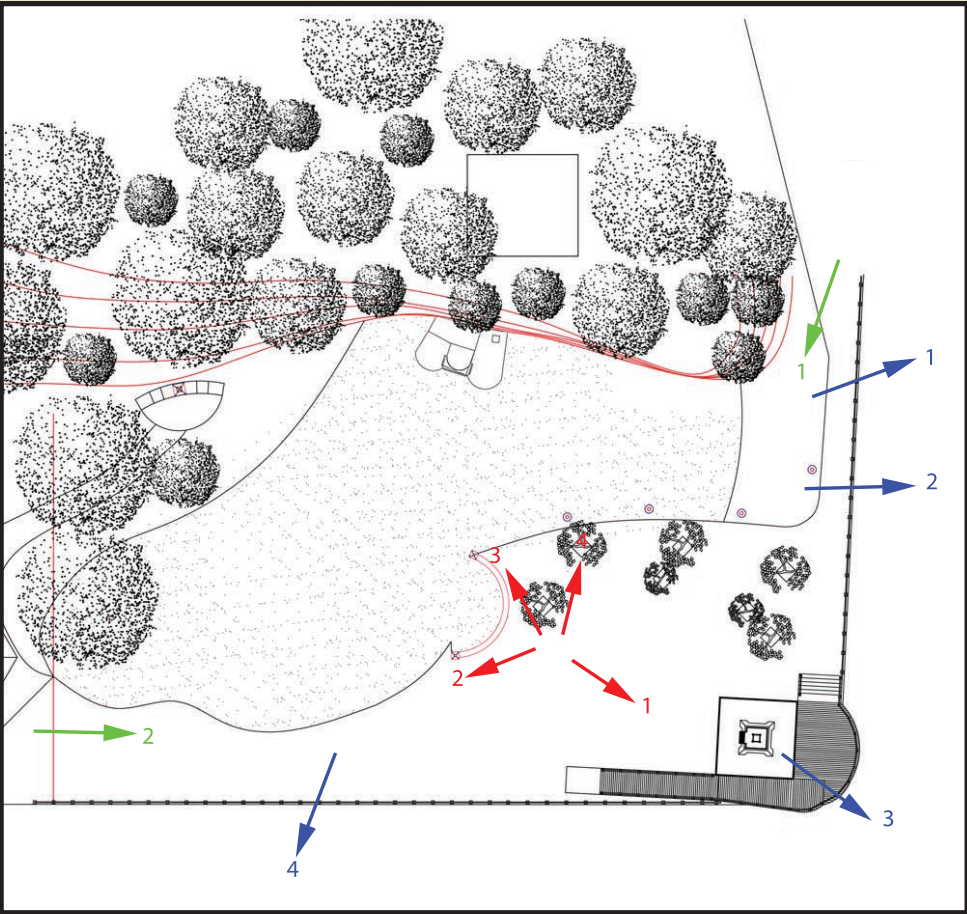


SITE CONTEXT

The site context has a mixture of historical and current structures. The historical structures are located all around the park, with description boards to explain to visitors the history of said structures. The structures include a watchtower, machine gun posts, an obelisk and a replica of the Dragon's Tooth Gate. The current structures are more inclined to public amenities, such as an event area, a beacon, a fitness course and playground, Wonders of the Wind, barbecue pits and gondolas for shelter



VIEWS



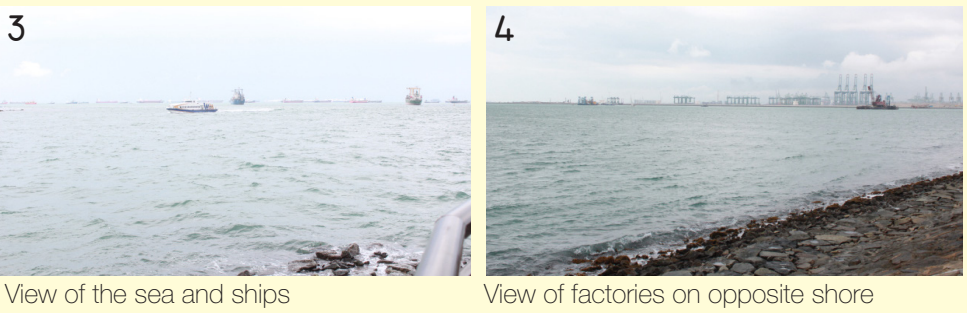
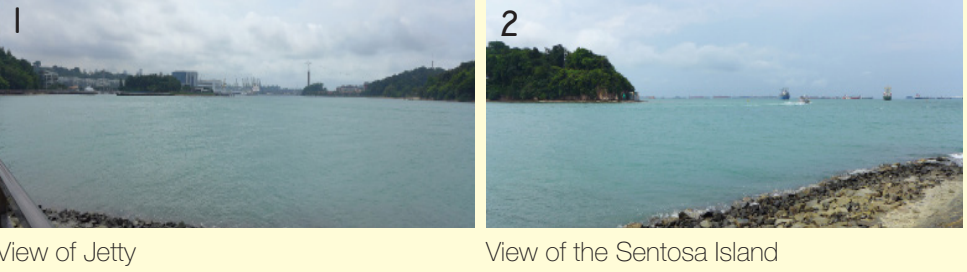
As seen in the site context, there are many interesting elements located at the site. Thus, the views of the site contain a mixture of different elements that are either built in the past or present, along with its natural contour and scenery. Here, the views are narrowed down to three categories; views to, from and through the site.

- VIEW TO THE SITE
- VIEW FROM THE SITE
- VIEW THROUGH THE SITE

VIEW TO THE SITE



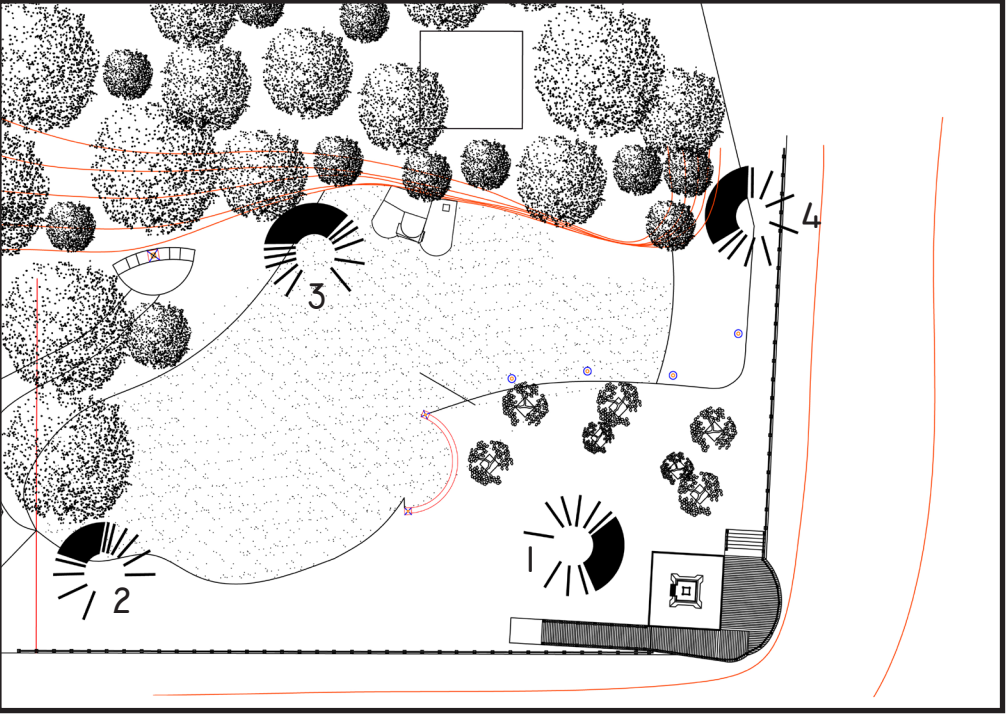
VIEW FROM THE SITE



VIEW THROUGH THE SITE

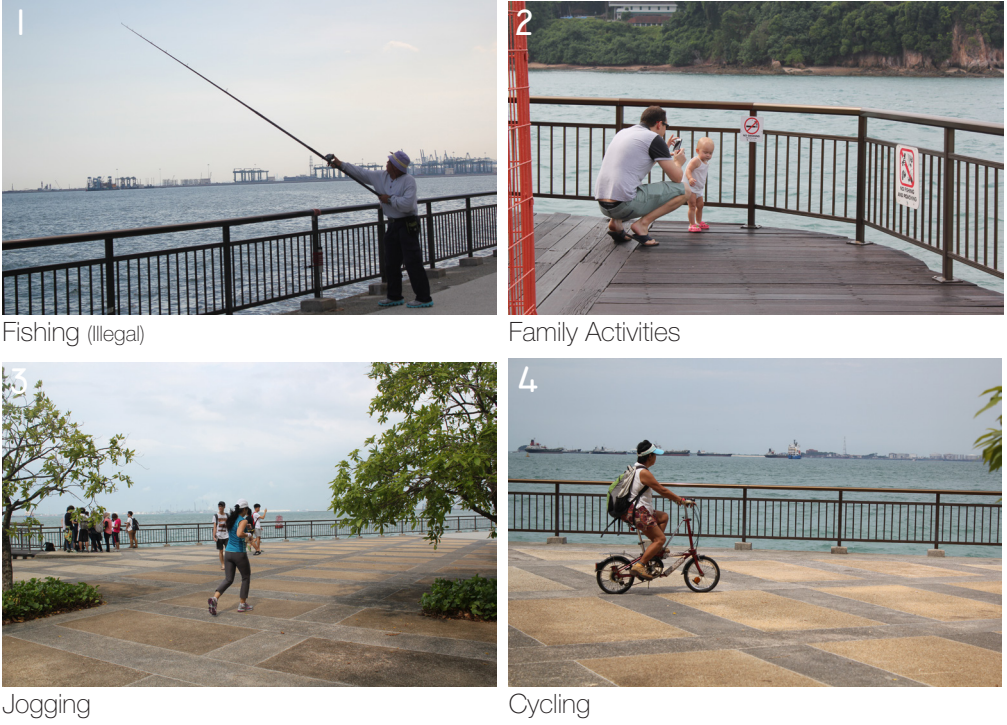


VIEW QUALITY



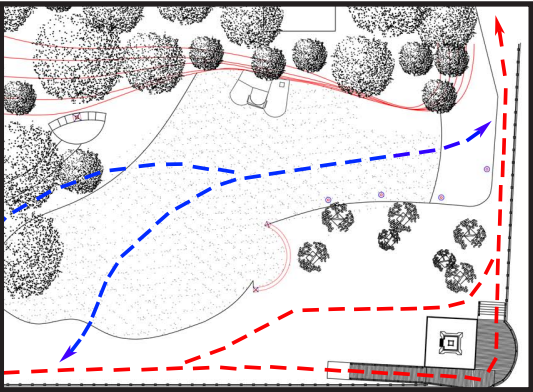
- 1. Bad: Beacon obstructs view of sea
Good: View of cliff, existing structures and vegetation
- 2. Bad: Facing vegetation, view of park obstructed
Good: Unobstructed coastal view of sea
- 3. Bad: Facing vegetation, no views beyond that point
Good: Unobstructed view of sea
- 4. Bad: View of vegetation and cliff
Good: Unobstructed view of jetty and Sentosa Island

ACTIVITIES



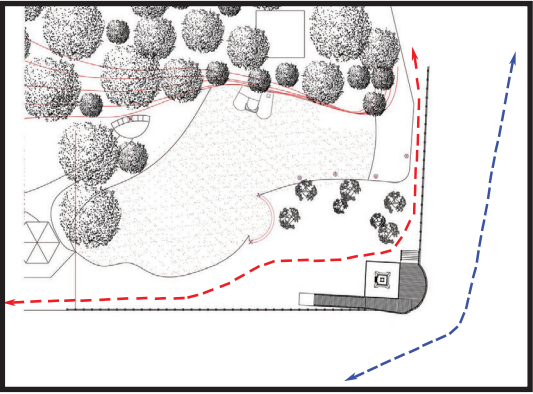
CIRCULATION

HUMAN CIRCULATION



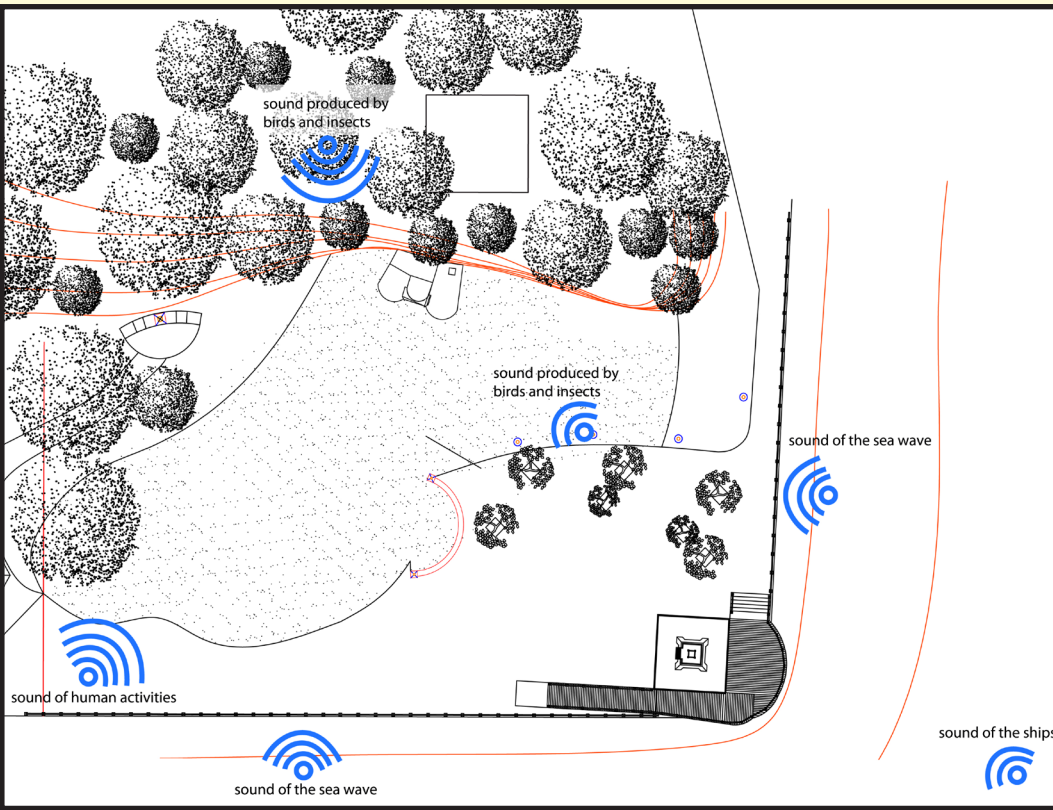
There are two entry points to the site, one from the path of the Dragon's Tooth Gate and the other from the park.

VEHICULAR CIRCULATION



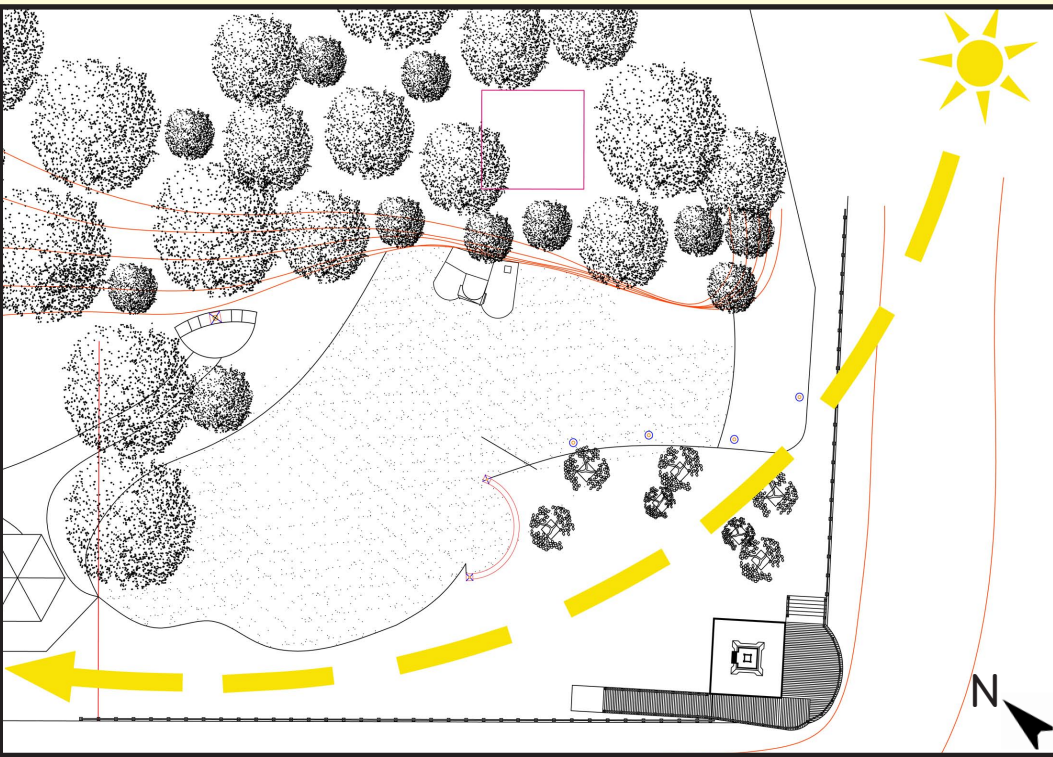
There are constant cycling and ship activities circulating around the site everyday.

NOISE



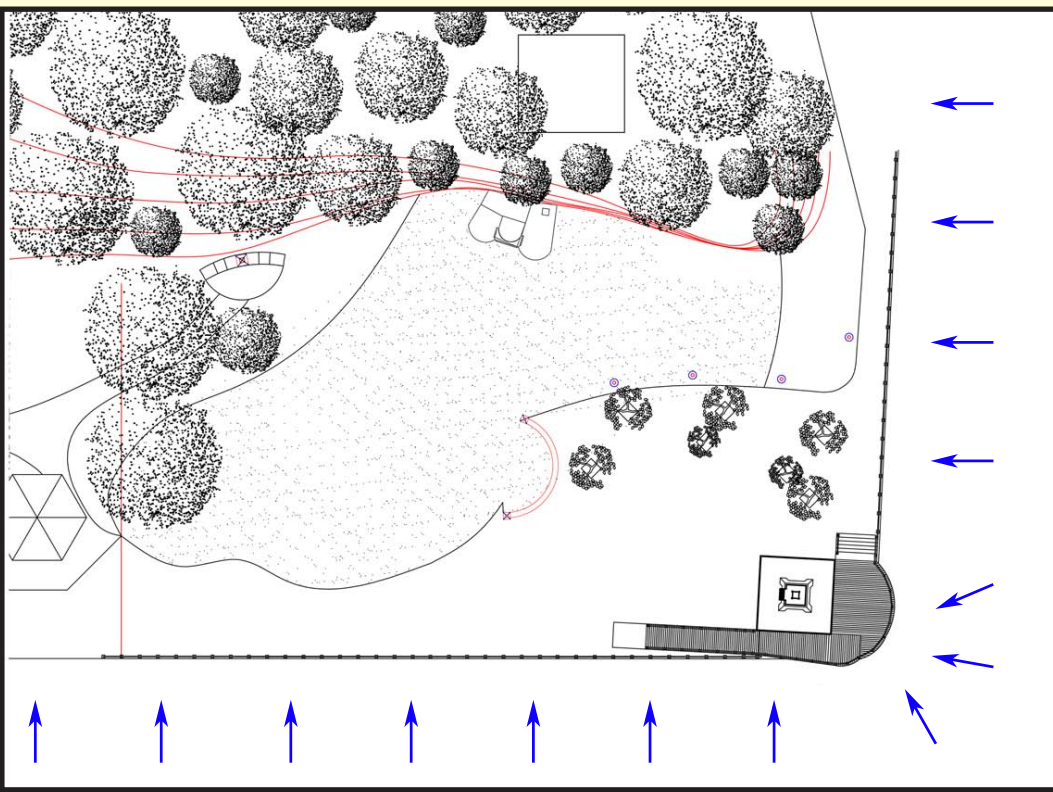
Noises come from various places at the site throughout the year. Such noises include insects, ships, crashing of waves and human activities.

SUNPATH



As seen in the diagram, the site receives sunlight from early morning all the way until evening, as it is fully exposed to both East and West directions.

WIND



Wind comes from all directions mainly from the sea, and mostly as a sea breeze that cools the air on land throughout the day. Thus, the site is always windy and cooling, making the site a popular space for human activities.